

Svetsprodukter

Snap-on Tools

THE RIGHT TOOLS FOR THE JOB

Svetsprodukter





24Q4-CT9050GDB ●
18 V 1/2" DRIVE MONSTERLITHIUM CORDLESS IMPACT WRENCH (TOOL ONLY) (GREEN)

- 1,000 ft-lb (1,355 N·m) of bolt breakaway torque and 800 ft-lb (1,085 N·m) of working torque
- Three torque settings adapt to various applications
- Brushless motor for longer run time and durability
- Super bright 100 lm LED light output
- Variable-speed trigger for precise control



4,995 kr.



24Q4-CDR9050DB ●
18 V 1/2" MONSTERLITHIUM CORDLESS HAMMER DRILL (TOOL ONLY) (RED)

- 470 in-lb (53 N·m) of torque output
- Two-speed gearbox—420 and 2,000 RPM
- Keyless 1/2" single-sleeve metal chuck
- Drill, hammer and screw modes with 23 clutch settings
- Brushless motor for longer run time and durability
- Variable-speed trigger for precise tool control
- Super bright 100 lm LED light output



4,395 kr.



24Q4-CDR9015DB ●
18 V 1/2" MONSTERLITHIUM CORDLESS DRILL (TOOL ONLY) (RED)

- 470 in-lb (53 N·m) of torque output
- Two-speed gearbox—420 and 2,000 RPM
- Keyless 1/2" single-sleeve metal chuck
- Drill mode plus 18 clutch settings adjust for the particular application
- Brushless motor for longer run time and durability
- Variable-speed trigger for precise tool control
- Super bright 100 lm LED light output



4,275 kr.



24Q4-CTFLU9050
18V FLOODLIGHT (EU)



2,350 kr.



24Q4-CTVAC9050A

18 V MONSTERLITHIUM CORDLESS VACUUM
(TOOL ONLY)

- 2.5-gal wet or dry tank eliminates the need for two specialized vacuums
- Powerful 18 V motor delivers 59 CFM of volume to handle a wide range of material
- Industry-leading suction is ideal for broken glass, rocks, coins, sand and much more
- Oversize power switch is easy to use, even with gloves
- Extra long 6' hose can double in length so it can reach further into applications



2,995 kr.



24Q4-CTINFU9050
18V CORDLESS INFLATOR EU



2,475 kr.

- Features a heavy-duty 30mm, high-volume piston compressor motor
- Thermal shut-off protection circuit
- Assorted nozzle inflators included
- Powered by 18v Snap-on battery (not included)

24Q4-CTAB9050 ●

18 V MONSTERLITHIUM CORDLESS BLOWER
(TOOL ONLY) (RED)

- Get the job done with a maximum air speed of 100 mph
- Maximum air volume of 450 CFM and 14,800 RPM for quick turnaround time
- 15' clearance range
- High/Low switch for proper air speed
- Balanced, lightweight design
- Run-time is approximately: High, 10 minutes; Low, 20 minutes



2,425 kr.



24Q4-CT825W1 ●

14.4V 1/4 IMPACT WRENCH WITH 1 X BATTERY (RED)

- 100 ft-lb (135 N.m) of bolt breakaway torque and 70 ft-lb (95 N.m) of torque output
- Variable-speed standard-style trigger for precise control
- Tri-beam headlight illuminates the work area
- Built-in brake prevents the tool from throwing fasteners and sockets
- Over current and thermal protection of the motor prevents tool from overheating
- Under voltage protection will not overdraw the battery
- Built-in gauge indicates level of battery charge
- 1 battery included



3,995 kr.



24Q4-CT825GDB ●

14.4 V 1/4" DRIVE MICROLITHIUM CORDLESS IMPACT WRENCH (TOOL ONLY) (GREEN)

- 100 ft-lb (135 N.m) of bolt breakaway torque and 70 ft-lb (95 N.m) of torque output
- Variable-speed standard-style trigger for precise control
- Tri-beam headlight illuminates the work area
- Built-in brake prevents the tool from throwing fasteners and sockets
- Over current and thermal protection of the motor prevents tool from overheating
- Under voltage protection will not overdraw the battery
- Built-in gauge indicates level of battery charge



3,450 kr.



24Q4-CTSS761DB ●

14.4 V MICROLITHIUM CORDLESS IN-LINE SCREWDRIVER (TOOL ONLY) (RED)

- 65 in-lb of torque output to get the job done
- 1,350 RPM
- Variable-speed trigger allows the user to regulate the proper RPM
- Nine-position clutch to dial in the proper torque
- Built-in LED illuminates work area
- Rapid 70-minute charge time keeps the job moving
- Handles most standard style screwdriver bits as well as power bits
- One-handed bit insertion



1,895 kr.



24Q4-CTLSH861 ●

14.4 V MICROLITHIUM 700 LUMEN SHOP LIGHT (RED)

- COB LEDs provide approximately 700 lm light bar and 200 lm spotlight
- 10-minute low battery warning indicator
- 4-hour run time at the highest brightness; 14-hour run time at the lowest brightness
- 200 lm spotlight run time of approximately 11 hours
- Variable brightness switch (0–100%) gives the ability to select the right amount of light for every situation
- Individual switches for each light provides faster, easier interaction
- Hook provides five locked positions
- Works with Snap-on® CTB8172BK or CTB8174 Battery Pack (batteries and charger sold separately)
- IP64 resistant to water and dust infiltration



1,450 kr.



24Q4-PH3045A ●

HEAVY-DUTY SHORT BARREL AIR HAMMER (3,500 BPM) (RED)

- 3,500 BPM with hardened steel piston, delivering harder blows for maximum impact
- Compact and lightweight, perfect for applications in small, hard-to-access areas
- Dual elastomer cushions absorb shock and vibration, reducing user fatigue
- Phenolic (Kevlar® reinforced) flutter disc for durability
- Direct multiport front exhaust keeps air and debris away from user
- High-grade steel barrel provides greater strength
- Variable-speed soft-touch trigger with featherability for superior control
- Four-position built-in air regulator varies power for different applications
- Air line screen helps prevent foreign particles from clogging trigger mechanism



3,995 kr.

24Q4-MG725AMB ●

1/2 HEAVY DUTY IMPACT WRENCH (BLUE)

- 1,190 ft-lb (1,613 N·m) of bolt breakaway torque and 810 ft-lb (1,098 N·m) of working torque
- Faster motor start-up and greater performance with more torque than previous model
- Balanced design for superior control and less user fatigue
- Patented cushion-grip handle reduces vibration
- Patented cushion grip tip valve trigger provides comfort and greater tool control
- Anvil stops with release of the trigger to prevent throwing fasteners
- Easy turn regulator for convenient speed control
- Weighs 4.8 lb (2.2 kg)



5,575 kr.



24Q4-AT2550

1/2" DRIVE COMPACT IMPACT WRENCH (BLUE-POINT®)

- 300 ft-lb (406 N·m) of torque
- Jumbo hammer mechanism
- Thumb-operated forward/reverse lever
- Three forward speeds and one reverse speed
- Exhaust is released through the bottom of the handle, away from the work area



2,795 kr.



24Q4-AT5000

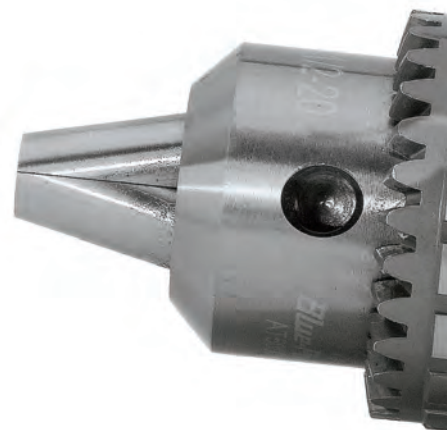
1/2" REVERSIBLE DRILL (BLUE-POINT®)



- Convenient one-handed forward/reverse operation
- Variable-speed trigger
- Exhaust is released through the bottom of the handle, away from the work area
- Chuck key conveniently stores in the handle



2,350 kr.



3,575 kr.



24Q4-PTR838

3/8" DRIVE LONG-NECK AIR RATCHET (RED)

- Long neck ratchet with extra-long reach for those hard-to-reach fasteners
- Soft grip handle provides increased comfort and insulation from the cold while reducing vibration
- Larger forward/reverse knob makes it easy to switch directions even with greasy hands
- Zerk fitting allows ratchet head to be lubricated for longer tool life
- Variable-speed trigger allows for slow motor start-ups
- Balanced lightweight housing for superior comfort and control with less user fatigue
- Manual torque load of 46 ft-lb



24Q4-PTGR115 ●

1/3 HP LONG-NECK RIGHT ANGLE MINI DIE GRINDER (RED)

- Extra-long neck with 90° head angle for access to work
- Thermally balanced air motor provides power in a small package
- 25,000 RPM free speed handles the big jobs
- 1/4" collet accepts most common accessories
- Industrial-grade gears and motor provide a longer lasting tool
- Built-in regulator provides the ability to dial in exact speed for a specific application
- Adjustable rear exhaust allows user to direct airflow away from work area



3,775 kr.



24Q4-PDRR2005 ●

MINI RIGHT ANGLE AIR DRILL, (RED)

- Compact head for access to tight spaces
- Low spindle runout for precise drilling
- Accepts bits with 1/4"-28 thread
- Spindle shaft supported by double bearings for increased durability
- Spiral bevel gears for durability and smooth operation
- Variable-speed trigger maximizes performance and control



3,550 kr.



24Q4-AT157R

3" REVERSIBLE AIR CUT-OFF TOOL (BLUE-POINT®)



- Ideal for use in body shops and other general automotive applications
- Spark direction control
- Extended reach for hard-to-access areas
- Built-in speed regulator for fine tuning
- Safety throttle lever
- Comfort grip handle
- Uses wheels only rated above 18,000 RPM
- Recommended for cutting mufflers, hose clamps, bolts and sheet metal



1,495 kr.





24Q4-AT238A

3/8" DRIVE MINI IMPACTING RATCHET WRENCH (BLUE-POINT®)

- Reaction-free clutch mechanism prevents kick-back
- 40 ft-lb torque
- Compact size allows for greater access to tight spaces
- Lightweight design reduces fatigue
- 1/4"-18 NPT air inlet thread size



2,475 kr.



Blue-Point®



24Q4-AT811

3/8" ANGLE DRILL (BLUE-POINT®)

- Convenient one-handed push-button forward/reverse operation
- Rear exhaust keeps air away from the work area
- Ball-bearing construction for longer tool life
- 90° angled head for easy access



1,995 kr.



Blue-Point®



24Q4-AT235MCA

1/4" DRIVE MICRO IMPACT WRENCH (BLUE-POINT®)

- 25 ft-lb of torque output
- Balanced, lightweight, reduces fatigue
- Durable composite housing
- Oversized trigger with variable-speed
- Convenient one-handed forward/reverse lever
- Exhaust is released through the bottom of the handle, away from the work area



2,100 kr.



Blue-Point®

24Q4-POWERTOTEBK POWER TOOL TOTE BAG



625 kr.



24Q4-YA745A OIL SPRAY GUN (BLUE-POINT®)

- 16 oz capacity
- Fast, clean method for removing or adding transmission and gear oil
- Special follower is impervious to oil, grease and water



450 kr.



24Q4-YA427B ● WELDING GLOVES (BLUE-POINT®) (RED)

- Help protect hands from sparks when welding
- Leather construction with added insulation for heat protection
- Reinforced palm for durability



195 kr.



24Q4-YA4615 AUTO DARKENING WELDING HELMET WITH EXTERNAL SHADE CONTROL (RED SPLASH)

- 3.86 x 1.73" (98 x 44 mm) viewing area
- Convenient external shade controls and grind lockout mode
- Solar-powered lens with easily replaceable AAA battery backup
- Dual adjustable shade modes (#5-8 and #9-13)
- Sensitivity and delay adjustments
- Four wide-angle arc sensors
- Striking graphics
- Complete deluxe comfort-fit headgear assembly



2,395 kr.



24Q4-BK5700 5.5 MM VIDEO SCOPE

- 4.3" Capacitive touchscreen
- 5.5 mm dual-view imager
- 1280 x 720 resolution
- Durable kickstand
- 16 GB SD memory
- Charges in approximately 2.5 hours
- Includes four interchangeable power source adaptors, USB-C to USB-A power cord and nylon storage bag



8,995 kr.



24Q4-EECT402USB

12 V DIGITAL DISPLAY CIRCUIT TESTER WITH USB PLUG

- Detects DC voltage on newer cars, trucks, motorcycles and more
- 0-19.9 V DC range
- USB plug allows measurement of DC voltage, ground and open circuits without changing polarity
- No clamp connection to vehicle battery for quicker diagnosis
- Backlit daylight readable LCD digital display has LED illumination in green for ground or red for power
- Leaves one hand free to jiggle a wire, replace a fuse or operate a switch
- 3-1/2" stainless steel corrosion free shank
- Patented Instinct® clear handle for visibility, style and comfort
- Traditional 12 V CLA adaptor is included for older vehicles (EECT402USB-1)
- 18 Gauge coil cord stretches to 13'



1,225 kr.

24Q4-ECARJ142 ●

1,400 LUMEN MULTIPURPOSE TASK BAR LIGHT

- 1,400 lm light has run time of 3 hours; low setting provides 120 lm for 27 hours
- Magnetic base rotates 105° and provides hands-free use
- Angled sides make it easy to position the light
- Long COB LED strip for better light distribution
- Anti-slip surfaces
- Compact design for handheld use
- Wide COB reduces harsh shadows
- CE, RoHS, UKCA certifications



1,750 kr.

24Q4-ECHDF042 ●

450 LUMEN HIGH-TECH HEADLAMP (RED)

- Two 225 lm lights provide a total of 450 lm
- 90° rotating light heads allow user to angle the light where needed
- Individual dimmable lights control light output for specific needs
- High-tech ergonomic design
- Inside of the band is a flexible polypropylene plastic for a comfortable fit
- TPR (thermoplastic rubber) material rests softly around the ear for all-day comfort



875 kr.



24Q4-RAT3HLFDDT ●

3 PIECES FLEX RATCHET SET LONG (DARK TITANIUM)

- Set includes 1 x 1/4" 1 x 3/8" and 1 x 1/2" ratchets



4,850 kr.

24Q4-TRLLF72

1/4" DRIVE DUAL 80® TECHNOLOGY EXTRA-LONG HANDLE FLEX-HEAD QUICK-RELEASE RATCHET



1,125 kr.

- Extra-long handle for reaching hard-to-reach fasteners
- Dual 80® Technology features seven teeth that engage the gear for added strength and durability
- 72 teeth and dual pawls for minimum swing arc while maintaining maximum strength and durability
- Quick-release button for rapid socket and accessory changes, even with greasy or oily hands
- Sealed head to keep lubrication in and dirt out
- 10-1/2" long



24Q4-STARTERSET5

17 PC 3/8" DRIVE SHALLOW 6-POINT METRIC STARTER SET

- High-strength sealed head ratchet built for strength, precision and durability
- Wobble engagement on extensions provides 16° of additional accessibility
- Sockets feature Flank Drive® wrenching system which grips the fastener on the flanks/flats increasing torque by up to 15%–20%
- Nickel-chrome plating provides a wear-resistant finish along with a mirror-like finish
- Highest quality steel on breaker bar provides strength and durability



3,375 kr.

24Q4-F100

3/8" DRIVE CYNERGY™ RATCHET



1,125 kr.

- 100-tooth gear with 3.6 degrees of swing arc makes it easy to work in tight spaces
- Low-profile head for increased accessibility
- Steel reverse lever provides strength and durability
- Optimal handle lengths means more torque with less effort
- Sealed head keeps lubricants in and contaminants out
- Trademarked handle is contoured for comfort and control

24Q4-FF100

3/8" DRIVE CYNERGY™ FLEX-HEAD RATCHET



1,275 kr.

- 100-tooth gear with 3.6 degrees of swing arc makes it easy to work in tight spaces
- Low-profile head for increased accessibility
- Steel reverse lever provides strength and durability
- Optimal handle lengths means more torque with less effort
- Sealed head keeps lubricants in and contaminants out
- Trademarked handle is contoured for comfort and control

24Q4-FK100

3/8" DRIVE CYNERGY™ STUBBY HANDLE RATCHET



1,050 kr.

- 100-tooth gear with 3.6 degrees of swing arc makes it easy to work in tight spaces
- Low-profile head for increased accessibility
- Steel reverse lever provides strength and durability
- Optimal handle lengths means more torque with less effort
- Sealed head keeps lubricants in and contaminants out
- Trademarked handle is contoured for comfort and control

24Q4-FHF100 ●

3/8" DRIVE CYNERGY™ SOFT GRIP FLEX-HEAD RATCHET (RED)



1,350 kr.

- 100-tooth gear with 3.6 degrees of swing arc makes it easy to work in tight spaces
- Low-profile head for increased accessibility
- Steel reverse lever provides strength and durability
- Optimal handle lengths means more torque with less effort
- Sealed head keeps lubricants in and contaminants out
- Trademarked handle is contoured for comfort and control

24Q4-FH100 ●

3/8" DRIVE CYNERGY™ SOFT GRIP RATCHET (RED)



1,195 kr.

- 100-tooth gear with 3.6 degrees of swing arc makes it easy to work in tight spaces
- Low-profile head for increased accessibility
- Steel reverse lever provides strength and durability
- Optimal handle lengths means more torque with less effort
- Sealed head keeps lubricants in and contaminants out
- Trademarked handle is contoured for comfort and control

3/8" DRIVE DUAL 80® TECHNOLOGY MULTI-POSITION RATCHET

- Ratchet head indexes 16 positions across 240° for better access to fasteners around blind corners
- Three-in-one ratchet that functions as an offset fixed-head ratchet, conventional straight ratchet and as a 360° speeder ratchet
- Push/Pull speeder function for fast bolt tightening or loosening in constrained work areas
- 360° crank rotation speeder function for fast bolt removal
- Dual 80® Technology features seven teeth engaging the gear for added strength and durability
- 80 teeth and dual pawls for minimum swing arc while maintaining maximum strength and durability
- Sealed head keeps lubricants in and contaminants out for longer life

24Q4-FHD80MP ● (BLACK)



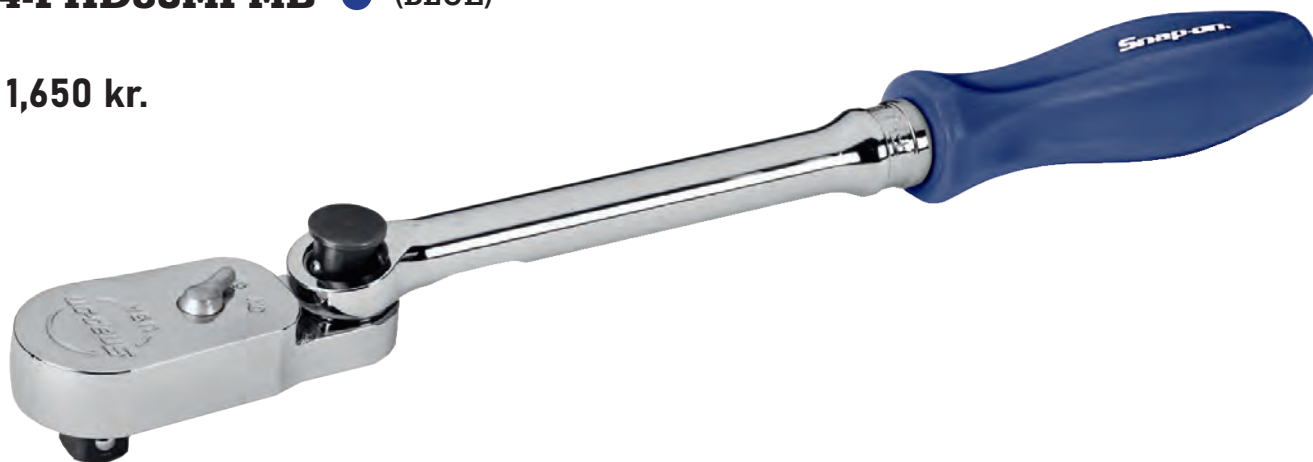
1,650 kr.



24Q4-FHD80MPMB ● (BLUE)



1,650 kr.



24Q4-FHD80MPPB ● (POWER BLUE)



1,650 kr.





 1,275 kr.

24Q4-202IPFX

2 PC 3/8" DRIVE IMPACT SWIVEL EXTENSION SET (6 AND 9")

- For fasteners on a "hard to reach" angle
- Laser welded pivot pin for smooth, full 30° swivel action for efficient power transfer
- Provides versatility for the technician as they can use any shallow, semi-deep, deep, 6-point, 12-point, metric or SAE impact socket—you are not limited to just one size
- Includes IPFX6 and IPFX9 (6 and 9")

24Q4-SL80A

1/2" DRIVE DUAL 80® TECHNOLOGY LONG HANDLE RATCHET

- Dual 80® Technology ratchet design features 80-tooth gear, with seven teeth in contact with gear to provide strength and durability
- Sealed head keeps lubricants in and contaminants out for longer life
- Durable, nickel-chrome plating produces a mirror-like finish that helps protect against corrosion and makes it easy to wipe clean



 1,450 kr.

24Q4-SN25A

1/2" DRIVE 24" 45° OFFSET SQUARE BREAKER BAR

- 24" long with a chrome finish
- 24-45° Offset
- Requires SN25-2 45° Offset Swivel Head and RKBB3 Repair kit for full repairs



 1,075 kr.

24Q4-SN4B

1/2" DRIVE 17-1/4" FLEX-HEAD SPEEDER DRIVE HANDLE

- Uses RKBB3 repair kit

 1,195 kr.



24Q4-124STTMM

24 PC 1/4" DRIVE 6-POINT METRIC FLANK DRIVE® SHALLOW/ DEEP SOCKET SET

- Includes TMM5-TMM16 shallow and STTMM5-STTMM15 deep sockets (5-15 mm) in magnetic storage tray



 3,325 kr.

24Q4-212SFMY

12 PC 3/8" DRIVE 12-POINT METRIC FLANK
DRIVE® DEEP SOCKET SET (8-19 MM)

- Includes 8-19 mm sockets in a magnetic storage tray

 2,150 kr.



24Q4-210RAF'SMA

10 PC 3/8" DRIVE 6-POINT METRIC
FLANK DRIVE® LOW-PROFILE RATCHET/
SOCKET SET

- Includes 8-18 mm sockets

 1,950 kr.



24Q4-320TSWMB

20 PC 1/2" DRIVE 6-POINT METRIC FLANK
DRIVE® SHALLOW/ DEEP SOCKET SET
(10-20 MM)

- Includes (20) Shallow and Deep Sockets (10-20 mm)

 4,295 kr.



24Q4-312SIMDM

12 PC 1/2" DRIVE 12-POINT METRIC FLANK
DRIVE® DEEP IMPACT SOCKET SET
(15-25 AND 27 MM)

- Includes 15-25 and 27 mm sockets in a storage tray

 3,095 kr.



24Q4-ETRM713MBA

3/4" DRIVE SOCKET SET, 22-50MM

- Set includes: 3/4" ratchet head with handle and sliding T-bar, 9-pc socket set (22mm-50mm) and 1" and 16" extensions
- Covers a range of commercial, car and motorcycle applications

 2,650 kr.

 Blue-Point®





24Q4-VSM807B

7 PC METRIC 30°/ 60° FOUR-WAY ANGLE OPEN-END WRENCH SET (10-15 AND 17 MM)

- Includes 10-15 mm and 17 mm wrenches in a storage tray



2,250 kr.



24Q4-BXORM706

6 PC 12-POINT METRIC 25° OFFSET REVERSIBLE RATCHETING BOX WRENCH SET (8-19 MM) (BLUE-POINT®)

- Includes (6 pc) (8-19 mm) in a storage tray



2,350 kr.

Blue-Point®

24Q4-OEXSM710B

10 PC 12-POINT METRIC FLANK DRIVE® SHORT COMBINATION WRENCH SET (10-19 MM)

- Includes 10-19 mm wrenches in a storage tray



2,995 kr.



24Q4-XBM605A

5 PC 12-POINT METRIC FLANK DRIVE® 10° OFFSET BOX WRENCH SET

- Includes 10-11 mm, 12-14 mm, 13-15 mm, 16-18 mm and 17-19 mm wrenches in a storage tray



1,875 kr.





24Q4-SOEX710

10 PC 12-POINT SAE FLANK DRIVE® PLUS COMBINATION WRENCH SET (5/16, 3/8-7/8")

- Includes 5/16, 3/8-7/8" wrenches in a storage tray



2,995 kr.



24Q4-SOXRR707A

7 PC 12-POINT SAE FLANK DRIVE® PLUS REVERSIBLE RATCHETING COMBINATION WRENCH SET (3/8-3/4")

- Includes 3/8-3/4" wrenches in a storage tray



3.350 kr.



24Q4-206EFAL

6 PC 3/8" DRIVE SAE EXTRA-LONG HEX BIT SOCKET DRIVER SET

- Includes 5/32-1/4, 5/16 and 3/8" sockets in a storage tray



1,350 kr.

24Q4-59CF

9" HEAVY-DUTY COMBINATION PLIERS (RED)

- Talon Grip™ Combination Pliers provide up to 57% increase in pulling power, with a relocated joint, optimized handle shape and diamond-serrated jaws
- Machined, hardened teeth are sharp and strong like file teeth on the largest gripping area of this style of pliers
- Large shear cutter provides a smoother cut with less hand pressure while being the largest cutter in combination pliers offering
- Natural steel finish has a tough clear coating to help protect against corrosion



650 kr.



24Q4-57CF

7" HEAVY-DUTY COMBINATION PLIERS (RED)

- Machined, hardened teeth are sharp and strong like file teeth on the largest gripping area of this style of pliers
- Large shear cutter provides a smoother cut with less hand pressure while being the largest cutter in combination pliers offering
- Fish tape feature behind the joint allows tape to be fully secured while pulling
- Gripper teeth behind the head can be useful for crushing and gripping



625 kr.



24Q4-LN44BCF

5" TALON GRIP™ LONG-NOSE SLIP-JOINT PLIERS (RED)

- Precision ground tips for gripping small items
- Precisely machined slot for effortless position switching and control
- Manufactured from special cold-forged steel with a higher alloy content for greater durability and strength
- Shear cutter provides a smoother cut with less hand pressure
- Longer contoured cushion grip handle for increased comfort, control and leverage



425 kr.



24Q4-44BCF

4" TALON GRIP™ COMBINATION SLIP-JOINT PLIERS (RED)

- Features a riveted, two-position slip joint with diamond-serrated jaws for maximum versatility and increased gripping capability
- Machined, hardened teeth are sharp and strong like file teeth
- Manufactured from special cold forged steel with a higher alloy content for greater durability and strength
- Shear cutter provides a smoother cut with less hand pressure



350 kr.



24Q4-HJ44BCF

4" TALON GRIP™ FLANKJAW™ SLIP-JOINT PLIERS (RED)

- Features a riveted, two-position slip joint with diamond-serrated jaws for maximum versatility and increased gripping capability
- FlankJaw™ geometry is designed to load away from the corners on hex nuts and bolts, allowing up to 30% more torque
- The smooth FlankJaw™ is optimized for grabbing 3/16-9/16" hex heads; will not destroy or round over the heads



350 kr.



3 PIECE SLIP JOINT PLIERS SET

- | | |
|-----------------------------------|-------------|
| 24Q4-PL346ACF (RED) | ● 1,395 kr. |
| 24Q4-PL346ACFG (GREEN) | ● 1,395 kr. |
| 24Q4-PL346ACFO (ORANGE) | ● 1,395 kr. |
| 24Q4-PL346ACFDT (TITANIUM) | ● 1,395 kr. |
| 24Q4-PL346ACFHV (HI-VIS) | ● 1,395 kr. |
| 24Q4-PL346ACFMB (BLUE) | ● 1,395 kr. |



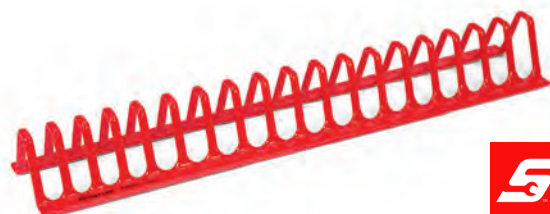
- Set contains 46ACFP, HJ46ACFP and LN46ACFP Talon Grip™ Slip-Joint pliers in a storage tray

PLIER RACKS

- Utilize full-drawer width and depth for pliers storage
- Slot spacing accommodates smaller and larger tools
- Plastisol-coated, stamped steel racks protect tools from scratches and provide positive engagement in the rack

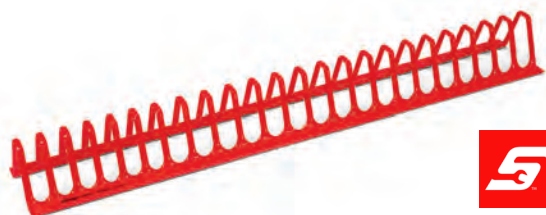


24Q4-PLRK21 ●
21" PLIERS RACK WITH 18 SLOTS (RED)



 450 kr.

24Q4-PLRK27 ●
27" PLIERS RACK WITH 23 SLOTS (RED)



 495 kr.

24Q4-PLRK30 ●
30" PLIERS RACK WITH 26 SLOTS (RED)



 525 kr.

BEFORE



AFTER



24Q4-PL3935CFG ●

3 PC TALON GRIP™ 35° BENT NEEDLE NOSE PLIERS SET (GREEN)

- 35° bent tip pliers help provide access into restricted clearance areas
- Natural steel finish has a tough and protective clear coating to help protect against corrosion
- These cold forged pliers feature a wide cushion grip for comfort and control



5 1,495 kr.

24Q4-HDWC8 ●

8" HEAVY-DUTY WIRE CUTTER (RED)

- Induction-hardened, precision-ground cutting edges aid with cutting and tool longevity
- Cutting edge geometry holds material in best position to maximize cutting power
- Made from high-performance alloy steel
- Phosphate anti-corrosion treated finish
- 3.8 mm (5/16") piano wire capacity



5 795 kr.

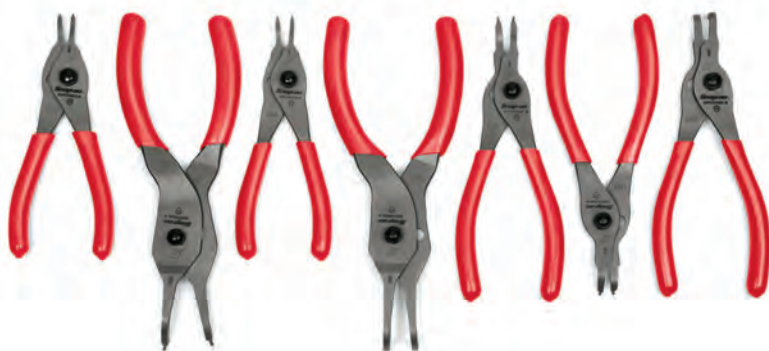


24Q4-SRPCR105ADMB ●

5 PIECES SNAP RING PLIERS SET (POWER BLUE)

- Includes (1) straight tip and (4) angle tip (.030-.090") in a tray
- Convert from internal to external rings with push-button quick-release design; up to 80% faster than previous SRPC design

5 1,475 kr.



24Q4-SRPCR107 (RED) ●

24Q4-SRPCR107DT (TITANIUM) ●

7 PIECES SNAP RING PLIERS SET

- Includes (3) straight tip and (4) angle tip (.030-.090") in a tray
- Convert from internal to external rings with push-button quick-release design; up to 80% faster than previous SRPC design

5 1,850 kr.



24Q4-PL5ESWIRESTRIP ●

5 PC ESSENTIAL WIRE STRIPPER SET, RED

- Strong, serrated gripping nose for bending, pulling and shaping of wire or connectors
- Precision-ground stripping holes make removing wire insulation a snap
- Compact design for working in confined areas

5 1,995 kr.

24Q4-YA335

BODY CLIP PLIERS (BLUE-POINT®)

- Steel levers enclosed in PMS plastic to prevent scratches
- Tips have a specified angle and size that deliver the most versatile clip tool on the market
- Eliminates need to buy multiple sets of trim clip pliers for different applications
- Specially designed and patented pliers will remove any clip found on trim and bumpers



350 kr.



Blue-Point®



24Q4-BPTCRP

TRIM CLIP REMOVAL PLIER

- Panel clip plier with two-step tip provides better support under the head of the clip to remove without damage
- Great for removing door cards, interior trims, side skirts and wheel arch liners



375 kr.



24Q4-AST6197

VAG BOOST HOSE CLAMP PLIER

- AST6197 These special pliers are designed to safely release the high tension spring clamp. The addition of the integrated locking device secures the clamp in the open position.
- Suitable for use across the range of 1.9 / 2.0TDi VAG engines
- Safely release the high tension spring clamp
- Integrated locking device secures the clamp in the open position
- Also suitable for use on coolant hose clamps



895 kr.

8, 16, 40 OZ BALL PEEN SOFT GRIP DEAD BLOW HAMMERS

- Polished steel peen and head for smooth striking surface
- Composite shank extends from the head through handle, delivering a more powerful blow and dampening vibration
- Internal steel canister with free-flowing shot design delivers maximum dead blow action
- Multi-position hand grip allows user to choke up in tighter work areas
- Wide flare at end of handle helps prevent hammer from slipping out of user's hand
- "De-coupled" head and composite shank reduce transference of hammer strike vibration, meaning reduced user fatigue
- Microcellular soft grip manufactured from a soft, comfortable energy-absorbing material
- Highly visible Snap-on® color makes it easy to find

24Q4-HBBD8 ● 8 OZ BALL PEEN SOFT GRIP DEAD BLOW HAMMER (RED)



575 kr.



24Q4-HBBD16 ● 16 OZ BALL PEEN SOFT GRIP DEAD BLOW HAMMER (RED)



625 kr.



24Q4-HBBD40 ● 40 OZ BALL PEEN SOFT GRIP DEAD BLOW HAMMER (RED)



975 kr.





24Q4-PPSD120BK 12 PC PIN AND STARTER PUNCH SET

- 12 pc in KB2187 kit bag



2,250 kr.



24Q4-PPLT40AK 4 PC DRIFT PIN PUNCH SET

- Includes (1) 8", (1) 8-1/2", (1) 9" and (1) 9-1/2" drift pin punches in a kit bag



1,475 kr.



24Q4-SPHDSET4 4 PC HEAVY-DUTY SPRING PUNCH SET

- Deliver accurate blows to the toughest materials
- No hammer required
- Knurled shank provides secure grip for precise control even when using gloves
- Made from hardened-carbon steel for use in a variety of mechanical and metal working applications
- Each blow delivers up to 5,000 PSI of impact force



1,075 kr.



24Q4-PHG90B TOYOTA® BRAKE PIN PUNCH

- Designed specifically to remove seized brake pins in various Toyota® trucks and SUVs
- Zinc clear chromate finish provides bright plating for greater visibility and corrosion resistance



475 kr.

24Q4-MPBS703A 3 PC STRAIGHT TIP PRYBAR SET

- Includes MPBS12A, MPBS24A and MPBS36A (12, 24 and 36-5/8")



1,995 kr.



24Q4-PBMP703A 3 PC MULTIPOSITION PRYBAR SET (8, 12 AND 16")

- Set contains PBMP8A (8"), PBMP12A (12") and PBMP16A (16") in storage tray



2,750 kr.



24Q4-SVTS7100-EUR

LARGE TRUCK COOLING SYSTEM TESTER

- Designed for truck cooling systems to pressure test for leaks
- Tester achieves required 35 PSI with fewer pump strokes
- reducing physical effort by nearly one-half
- Includes TAB10022 / 10025 / 10027 / 10084 / 10054 / 10102



4,950 kr.



Blue-Point

24Q4-BPIDISS

INJECTOR SOCKET SET (BLUEPOINT)

- Open-sided, 1/2" drive sockets for injector removal and installation
- Set includes 12pt 21,22,27 and 28 mm and 6pt 22 and 8mm



950 kr.



24Q4-GA358B ●

INSTINCT® AIR CHUCK (RED)

- Features a comfortable Instinct® soft grip screwdriver handle
- Thread size of 1/4" NPT
- 7" overall length
- Maximum rating is 150 PSI
- For use with air lines only—do not use on inflators



295 kr.



24Q4-TR107A ●

24Q4-TR107AO ●

TIRE VALVE TOOL

- 6-1/4" long



150 kr.



24Q4-AST5217

UNIVERSAL HUB HOLDING TOOL

- AST5217 Wheel Hub Holding Tool is suitable for vehicles with 3, 4 and 5 wheel studs or hub nuts.
- Universal - suitable for a wide range of vehicles
- Also suitable for holding crankshaft hubs and sprockets
- Used in conjunction with AST4939 Handle to counter hold while removing & installing hub nuts
- OE manufacturers using an equivalent to this tool include Citroen, Peugeot and Toyota



650 kr.



Blue-Point®

24Q4-SNX3-4BP ●

BLUEPOINT 3T 4 PUMP BEAST (BLUE)

Features

- Self-Contained
- Specially designed pump allows the pivot arm to go from lowered position (100mm) to meeting the load in just 4 pumps
- Low Height: 102mm
- Raised Height: 495mm
- Length: 710mm
- Width: 368mm
- Handle Length: 1,282mm



2,975 kr.

24Q4-BP2000EC ●

BLUE POINT 2000KG ENG CRANE CE

Features

- Folds compact to save floor space when not in use
- Minimum Height: 1,800mm
- Maximum Height: 2,130



6,900 kr.

24Q4-RG430A

DIGITAL ROTOR GAUGE

- Measures brake rotors and ball joints
- Pointed anvil and 3-1/2" long arms for increased measurement accuracy and coverage
- Selectable depth stops for easy use
- 0-5-1/2" (0-140 mm) range; .0005" (.01 mm) graduations
- Easy to read digital display with inch/metric conversion



1,450 kr.

24Q4-JCWFCNPRD ●

NEOPRENE FENDER COVER (RED)

- Smooth 4 mm 35 x 24" neoprene with a non-slip backing
- 12" ties can tie to the vehicle offering security while working
- Can be rolled up and tied for easy storage
- Handy open front pocket holds loose fasteners
- Side loops and end pockets secure tools within reach



825 kr.





1,350 kr.



24Q4-AST6190

7 PIECES STRUT NUT SOCKET SET

- AST6190 Strut Nut Set will efficiently release the strut leg by opening the clamp for easy removal / replacement without risking damage to the hub casting. The handy open sided sockets can be used with used with a hex key or spanner to counter hold the strut piston.
- Designed for use on most popular sizes found on the majority of european vehicles
- Suitable for a wide range of hubs commonly found on front and rear strut assemblies
- The lobed form of the spreaders reduces the amount of effort required to expand the hub clamp
- Included are 5 Bi-Hex 12pt open sided 1/2" drive sockets

Included within the set:

- 1 x 1/2" drive short hub clamp spreader
- 1 x 1/2" drive long hub clamp spreader
- 5 x Bi-Hex, 12pt open sided 1/2" drive sockets: 18mm, 19mm, 21mm, 22mm, 24mm



950 kr.



24Q4-AST6148

6 PIECES TORX IMPACT SET LONG

- AST6148 TRX-Star socket set is suitable for torx head fasteners which are widely used in the automotive industry and can be found in a number of applications, including Cylinder Head Bolts, Drain Plugs, Brake Caliper Bolts and Suspension Components.
- Sizes T55, T60, T70, T80, T90, T100
- Length 75mm - 1/2" Drive
- Quality - Chrome Molybdenum
- Suitable for use with impact guns and power bars
- Also available in 40mm length - socket set AST6118

Individual sockets within the set:

- AST6148-55 - T55 x 75mm
- AST6148-60 - T60 x 75mm
- AST6148-70 - T70 x 75mm
- AST6148-80 - T80 x 75mm
- AST6148-90 - T90 x 75mm
- AST6148-100 - T100 x 75mm



1,350 kr.



24Q4-AST6145

13 PIECES BRAKE CALIPER SOCKET SET

- AST6145 is a specialist socket set for removing Brake Caliper bolts on a wide range of vehicles. Suitable for german vehicles including BMW, Mercedes Benz, Porsche and VW/Audi Group.

Individual sockets within the set:

- AST6145-1 - 15 x 10pt x 50mm (1/2" drive)
- AST6145-2 - 20 x 10pt x 50mm (1/2" drive)
- AST6145-3 - 22 x 7pt x 48mm (1/2" drive)
- AST6145-4 - 11.5 x 10pt x 50mm (1/2" drive)
- AST6145-5 - 14 x 7pt x 50mm (1/2" drive)
- AST6145-6 - 9 x 10pt x 50mm (3/8" drive)
- AST6145-7 - H7 x 20mm (3/8" drive)
- AST6145-8 - H8 x 24mm (3/8" drive)
- AST6145-9 - H9 x 20mm (1/4" drive)
- AST6145-10 - H9 x 50mm (3/8" drive)
- AST6145-11 - H7 x 65mm (3/8" drive)
- AST6145-12 - H7 x 92mm (3/8" drive)
- AST6145-13 - H11 x 100mm (3/8" drive)

24Q4-AST6182

65 MM TRANSIT HUB NUT SOCKET

- AST6182 is used to remove and install the Rear Hub Nut on Ford Transit RWD models 2006 - 2014.
- Chrome Molybdenum Impact Quality Socket - 3/4" drive
- Enables to correctly loosen and tighten the 65mm rear hub nut during removal and installation of the hub assembly
- Sufficient clearance within the hub provided by the thin wall of the socket
- Hub Nut is tightened to 425Nm
- Equivalent to OE Ref 205-121

Applications:

- Transit RWD 2000 - 2006 VIN Axle Pate Code - A, B, C, D, G, M, P, X, Y
- Transit RWD 2996 - 2014



425 kr.

24Q4-AST6139

44MM BALL JOINT SOCKET PSA 3/4"

- AST6139 Ball Joint Socket is suitable for threaded ball joints fitted to Citroën, Peugeot and Toyota light commercial vehicles.
- 44mm, 6 point, 3/4" Sq Drive socket
- Impact quality, suitable for use with a power bar, impact gun or torque wrench
- Locates securely over the ball joint and onto the low profile hexagonal form
- Typical applications: Citroën Dispatch, Peugeot Expert and Toyota Pro-Ace (2016-)
- Equivalent to OE references 98 186 575 80 and SU001-A6525

Applications include:

Citroën

- Dispatch III Platform / Chassis (V) (09.2016 -) 95-150 PS, Diesel
- Dispatch III Van (V) (04.2016 -) 95-178 PS, Diesel
- Spacetourer V_ (04.2016 -) 95-178 PS, Diesel

Peugeot

- Expert III Platform / Chassis (V) (09.2016 -) 95-150 PS, Diesel
- Expert III VAn (V) (04.2016 -) 95-178 PS, Diesel
- Traveller (V_) (04.2016 -) 95-178 PS, Diesel

Toyota

- Proace II Van (02.2016 -) 95 - 177 PS, Diesel
- Proace II Verso (02.2016 -) 95 - 177 PS, Diesel
- Proace Platform/Chassis (MDZ_) (02.2016 -) 150 PS, Diesel
- ProAce Verso (MPY_) (02.2016 -) 95 - 177 PS, Diesel



350 kr.

24Q4-AST6169

HUB NUT SOCKET 74MM VW/MERCEDES

- AST6169 Hub Nut Socket has an outer diameter of 74mm with 6 lugs for positive location into the castellated nut of the twin wheel rear hub nut. Suitable for light commercial vehicles.
- 74mm diameter - 6 lugs to fit castellated nut of twin wheel rear hub nut
- Socket features a 3/4" drive
- Suitable for light commercial vehicles
- Applications include: VW Crafter and LT (06-17), Mercedes Sprinter (06-19), Opel/Vauxhall Movano-B (10-), Renault Master III (10-), Nissan NV400 (11-16)
- Equivalent to OEM Tool references: VAG T50017, Opel/Vauxhall CH-50112, Mercedes-Benz 06 589 00 07 00



895 kr.



1,995 kr.



Blue-Point®

24Q4-ATHUBSCRUBKIT HUB SCRUB KIT (BLUE-POINT®)

- Quickly and effectively removes rust and debris from hub surfaces
- 1/2" drive allows for use with an impact gun—simply attach like any standard impact socket
- High-quality tool sculpted from aircraft-grade aluminum
- The majority of hub cleaning tool products on the market require use with an air or cordless drill
- Enhances shop productivity by not having to change from an impact to a drill and back to an impact
- Improves wheel assembly with better torquing against a clean surface and improving balance by removing rust, dirt and other foreign materials from the lug threads, hub surface
- Includes ATHUBSCRUB, ATHUBSCRUBLG, ATHBSRBPADS (1 pk/3 pc), ATHUBSCRUBSMPADS (1 pk/3 pc), ATHUBSCRUBLGPADS (1 pk/3 pc) in a storage tray

24Q4-UHS1500 ● UNDERHOIST UTILITY STAND

- Release mechanism quickly places saddle at service height
- Foot pedal is ideal for aligning components to keep hands free
- Precise height adjustment is accomplished with hand crank
- Saddle is configured to adapt to various under car components and resists turning
- Foot pedal can be folded for compact storage



3,650 kr.



24Q4-CTSGHOLDER ● MAGNETIC SOLDERING TIP HOLDER (RED)

- Snap-on® exclusive "S" logo design soldering tip holder
- Provides eight different slots to hold the most popular soldering tips
- Hand-held and portable to carry soldering tips anywhere
- Two heavy-duty magnets allow the holder to be placed on any metal surface
- Made from NBR rubber—resistant to most shop fluids
- Weighs approximately 0.25 lb when fully loaded



275 kr.

24Q4-NOZZLEPG ● PISTOL GRIP HOSE NOZZLE (RED)

- Works with low or high water pressure
- Durable aluminum internal construction
- Two-way shutoff: nozzle head rotation or hand lever
- 360° Swivel Kink Reducer
- Screen insert keeps internals clear of debris
- Adjustable spray head creates fan, power-jet and mist patterns



1,175 kr.



Blue-Point®



1450 kr.

24Q4-YA9350B 9 PC RATCHETING BELT TENSIONING WRENCH SET

- Allows direct access to belt tensioners without removing engine accessories or frame components
- Covers almost 90% of all vehicles equipped with spring-loaded serpentine belt tensioners
- Includes (1) belt tensioning wrench and (8) adaptors
- All adaptors feature a 15 mm external hex drive
- Applications: Chrysler® (Dodge® and Plymouth®), Ford® (Lincoln® and Mercury®), GM®, Isuzu®, Jeep®, Lexus®, Mazda®, Mitsubishi®, Saturn, Toyota®, VW® vehicles

Blue-Point®



24Q4-TWP8 ● TRUCK WHEEL PAN (BLUE-POINT®)

- Helps prevent messes and spills
- Fits rims with 13-3/4" inside diameter or larger for use on most large trucks and trailers
- Holds 88 oz of oil
- Pan will not warp if the oil is warm
- Compartment above the handles holds the hub nuts



195 kr.

Blue-Point®



24Q4-YA6390 ● WINDOW HOLDER (BLUE-POINT®)

- Holds side window glass up when working on the regulator
- Suction cups are attached to both sides of the glass with a cable over the door frame, preventing the glass from falling down the door



250 kr.

Blue-Point®



24Q4-MRB10B MAGNETIC TRAY (BLUE-POINT®)

- 9-1/2 x 5-1/2" rectangular magnetic tray holds metal parts and small tools
- Magnetically attach to any flat iron or steel surface



295 kr.

24Q4-ACT900 ● REFRIGERANT LEAK DETECTOR (RED)

- Patented 3-LED UV lighting; 395-415 nm wavelength for optimum air-conditioning dye fluorescence
- Sweep mode function to pinpoint leak source
- Unique color LCD display with graphics and messages
- Automatic/manual calibration and reset to ambient levels
- Mute handle with vibrator
- Low battery indicator
- SAE J2791 (R134a) and SAE J2913 certified
- Three adjustable sensitivity levels

 4,195 kr.



 995 kr.



24Q4-DHS108 8 PC AUTOMOTIVE DOOR HINGE REMOVAL SET (BLUE-POINT®)

- Door hinge applications include VW®, Audi®, Jeep® Cherokee® (1997–1998) and early model Ford® Escort® vehicles
- Various applications on Audi®, VW® and Mercedes® vehicles—plus Mercedes® rear toe adjustment and head bolts on some early models
- Set includes DHW1 ratcheting bit wrench, BMAS60 through BMAS120 triple square sockets (6-12 mm) and SDMTAS30 through SDMTAS45 TORX® sockets (T30-T45) with plastic storage pouch and bit holder

24Q4-MAGBOWL ● MAGNETIC PARTS BOWL (2 PK)

- Oversized parts bowl holds lug nuts, fasteners and tools
- Additional front compartment holds smaller items
- Three high-power magnets attach firmly to ferrous metal surfaces
- Ideal for use on vehicle lifts, service trays and tool carts
- Durable ABS material withstands drops and harsh shop chemicals
- Holds up to 10 pounds
- 6" L x 3-1/2" W x 4" H

 525 kr.



24Q4-SNP2023K 2023 ZIPPO LIGHTERS WITH CASE (8PC)

 8,750 kr.

LIMITED
EDITION



24Q4-TBSOTFS047AR

FOAM KIT FOR SOTWZSET1

(13 SETS)



9,725 kr.

- Each foam pad measures 270 mm width x 443 mm depth, two foams can fit 1 x KRA2007 drawer. However, please note that only the 4 x screwdriver/pliers pads will fit the two first top drawers of the KRA2007.



24Q4-SOTWZSET1

SNAP-ON TOOL SET (297 PCS)



64,500 kr.

Contents	Qty	Contents	Qty	Contents	Qty	Contents	Qty
106BTMX	6	IP80D	1	FARMER 6	1	SOEXM21	1
112STMMY	12	OEXM6B	1	FARMER7	1	SOEXM22	1
112TMMY	12	OEXM7B	1	BOERM712	12	SOEXM24	1
204IMXA	4	OEXM8B	1	CSA8C	1	SOEXM710	10
206AFX	6	OEXM9B	1	CT861DB	1	SPBS12A	1
207EFAMY	7	PA2A	1	CT9050DB	1	SPBS8A	1
212EFTXY	12	PK53A	1	CTB8174	2	STSM10LE	1
212FSMY	12	PPC710BK	10	CTB8187	1	T72	1
212SFSMY	12	S8	1	CTCEU131	1	TA3	1
213AFLEY	13	S80A	1	CTR861DB	1	TF72	1
214IMFMYA	14	S9704KA	1	F5L	1	TM5	1
214SIMFMYA	14	S9706KA	1	F80	1	TMRT8	1
305ASX	5	SGASA204CR	4	FLF80A	1	TMS70A	1
315IMDMYA	15	SGDMRC44B	1	FU8A	1	TMU8B	1
310TWMYA	10	SGDP63IRBR	1	GFAT1E	1	TSS7KIT	7
47ACF	1	SGDTX90BR	9	GSAF1F	1	TWM20	1
612AEP	1	SGDX40BR	4	HBBD16	1	TWM21	1
87ACF	1	SGDX80BR	8	HBPT16	1	TWM22	1
911ACF	1	SGT4BR	1	HRR976-2	1	TWM23	1
91ACP	1	SGTX40BR	4	HRR976-3	1	TWM24	1
96ACF	1	SIMDM270	1	HRR976-6	1	TWM27	1
A2A	1	SIMFM22	1	HSG319	1	TWM30	1
FARMER21	1	SIMM170	1	IMFM22	1	TWM32	1
FARMER22	1	SIMM190	1	IMX32B	1	TWM32	1
BOERM24	1	SIMM210	1	IPF800B	1		

Svetsprodukter

Snap-on Tools

THE RIGHT TOOLS FOR THE JOB



Svetsprodukter

Din partner inom industri och svets



Svetsprodukter i Piteå AB : Fläktgatan 26 941 47 Piteå : 0911 - 21 14 15

info@svetsprodukter.se : www.svetsprodukter.se : Följ oss på FB & Instagram

Mail: info@svetsprodukter.se

Tel: 0911 - 21 14 15

Följ oss på FB & Instagram!